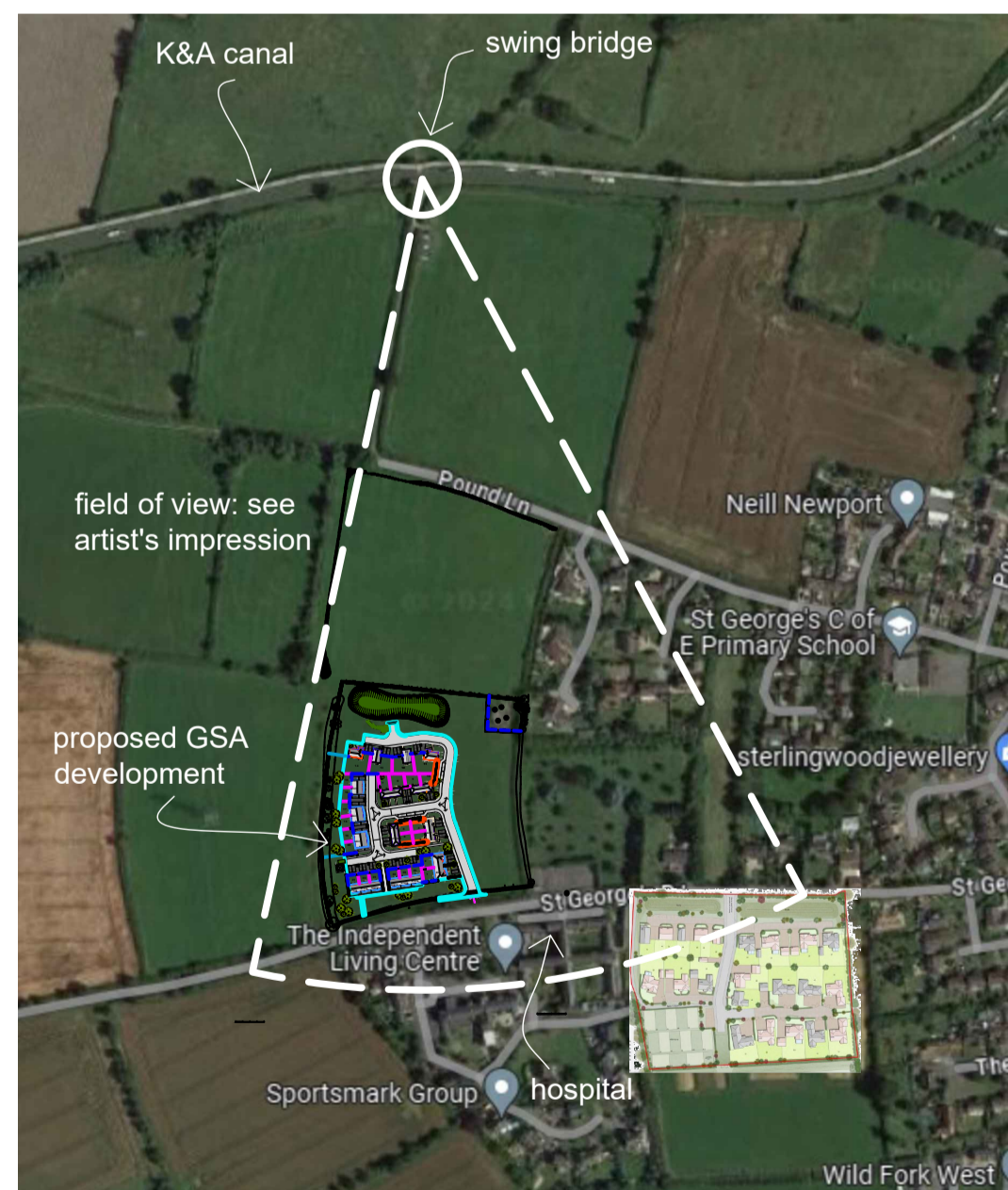




Artist's impression: view from the K&A canal swing bridge, facing south toward the St. George's Road hospital (left) and the proposed GSA development (right)



Key plan: canal bridge viewpoint



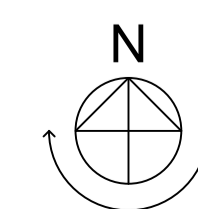
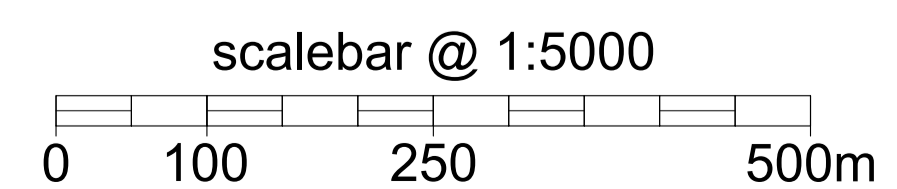
E: design.team@greensquareaccord.co.uk T: 01249 465465

Contractors must check all dimensions on site. Only figured dimensions are to be worked from. Discrepancies must be reported to the Architect before proceeding.  
THIS DRAWING IS COPYRIGHT. ©

REVISIONS:

A 07.02.24 Photo from canal bridge superimposed with proposed housing scheme and new boundary hedge planting.

XXX



Project  
**Land at St Georges Rd SEMINGTON**

Drawing Title  
**Canal bridge view**

Date  
**31.01.24**

Scale  
**1:5000 @ A1**

Project No.  
**22-010**

Status  
**Planning**

Drawn by  
**CAB**

Checked by  
**-**

Revision  
**PL\SL108/ A**